



SPALDING PARK GOLF CLUB



HONORING THE PAST

CHARACTERS AND INCIDENTS

The impossible task of playing a pennant golf match at 11:00am and commencing a bowls fixture at 1:00pm was no trouble for BETTY BIRCH.

Always a fast mover, Betty carted her Northampton opponent around at a breathtaking pace, sealed the match at the 12th, then, leaving the breathless and exhausted Leah Lucas on the seat at the 13th, steamed to her car and took the mat at the Bowling Club right on time.

Noting the feverish activity on the one hand and the reclining body on the other, adjacent players first feared the worst, but they soon had the partially recovered visitor sipping tea while wearily recounting the tearaway experience.

* * * * *

In Champion Bay days, JUDY FINDLAY recruited a group of young ladies and spent some time passing on the rudiments of the game.

Back in the clubhouse Judy relaxed her recruits with a cup of tea and a smoke until, suddenly, the Associates' President, a stickler for decorum, appeared in the doorway with the stern reprimand "Ladies! No smoking in the Clubhouse, Please."

The "Clubhouse" was endearingly known as the "Cowshed" and was a one-room structure with an annexe, built of corrugated iron with a rough con-

crete floor.

* * * * *



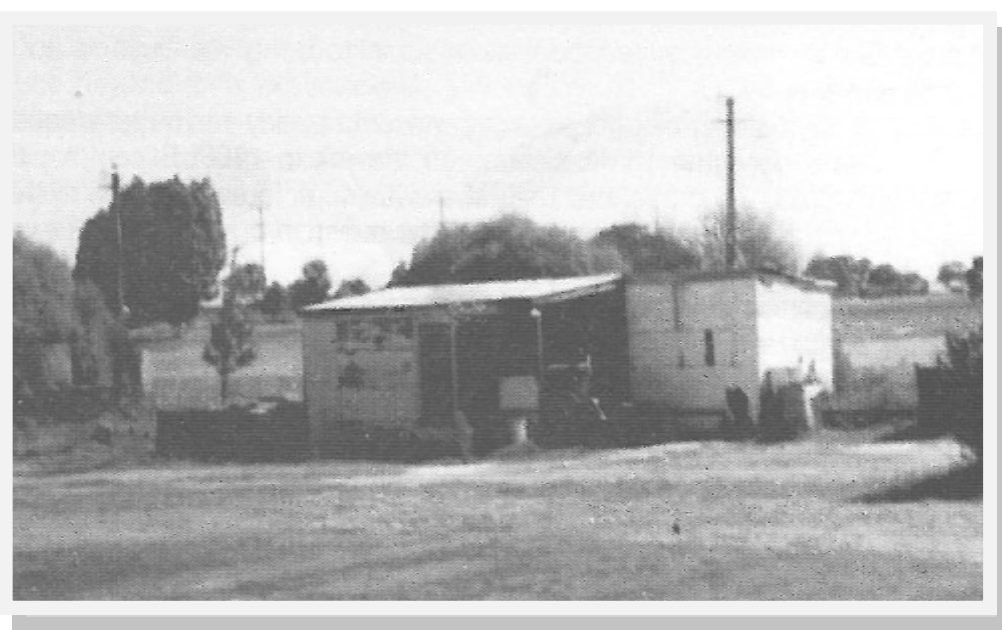
Practising at the net before hit off, NELL JUPP topped a ball which hit a brick securing the net and crashed through a west window, hit the piano, then returned through the same broken window and landed at her feet.

* * * * *

Another on golf balls and windows. DUDLEY GORDON (affectionately known as "Cuddly Dudley") hitting off number 10, put the ball through the kitchen window, fortunately glassless due to the clubhouse alterations. Previous experiences of Dudley's tendency to fire in that direction caused Associate kitchen workers to maintain a constant lookout with provision for prompt evacuation whenever the said player made for Number 10 tee.

* * * * *

DON WORTHINGTON recalls that in the early endeavours to grass the course he carefully seeded a large part of number 3 (his charge) but despite arduous and patient watering by hand, not one seed responded.



THE ORIGINAL CLUB HOUSE